

Be fa mayor

*1

*2

This system contains two staves of music. The first staff begins with a treble clef, a key signature of one flat (B-flat), and a common time signature. It features a melodic line with eighth and sixteenth notes, including some triplets. A handwritten asterisk and the number '1' are placed at the start. The second staff continues the melody, ending with a double bar line. A handwritten asterisk and the number '2' are placed below the first few notes of this staff.

otro

*3

This section consists of four staves of music. The first staff shows a melodic line with eighth notes and slurs. The second staff features a more complex melodic line with slurs and some grace notes. The third staff is dominated by sixteenth-note runs, with a handwritten '6' above several measures. The fourth staff concludes the section with a melodic line and a double bar line. A handwritten asterisk and the number '3' are placed below the first few notes of this staff.

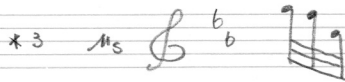
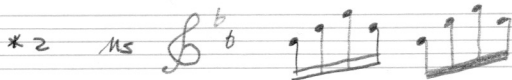
Be fa mayor

*1. Ms "Be fa menor"

現代の書法では si bemol mayor (変ロ長調)

be fa という書法は フェリナンドの教本に見えたり。

Fernando Ferandiere 著 "Arte de tocar la guitarra Española por musica" (1799)



-b は e, b の順に付けました。